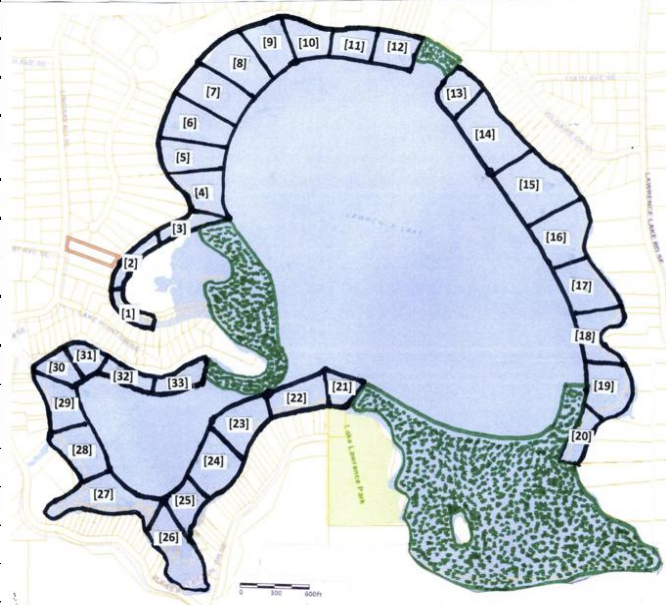


LAKE LAWRENCE SURVEY SHEET

| | | | | | | | | | | | | | | | | | | |
|---|--|----------------------------|-----------------|-------------------|-------------|----------------------|---------------|--|-------|----------|---------------|------------|----------|------|-----------|-----|-----|------------------|
| DATE: 14-May-26 | | | | | | COLLECTOR(S): | | Barry, Frank, Jim, Ken, Terry & Janice | | | | | | | | | | |
| Air Temp: 55-70 | | Water Surface Temp: | | 71 | | Weather: | | Slightly overcast to sunny | | | | | | | | | | |
| AVAS | Rake Pull | Geographic Location | Lat/Long | Depth (ft) | Water-Nymph | Nitella | Common Elodea | Narrow - Leaf | Curly | Big Leaf | Floating Leaf | Tape Grass | Coontail | Sago | Eel Grass | FWL | YFI | Geese A/G |
| A summary of the survey is provided below. Detailed survey results by AVAS are shown on subsequent pages. | | | | | | | | | | | | | | | | | | |
| RATINGS: | | | | | | | | | | | | | | | | | | |
| 1 Few plants in only 1 or a few locations - used to record the fact that a plant or specific species was found. | | | | | | | | | | | | | | | | | | |
| 2 Few plants, but with a wide patchy distribution. Small number of plants on rake head. | | | | | | | | | | | | | | | | | | |
| 3 Plants growing in large patches, codominant with other plants. More plants than 2, but fewer than a full rake head. | | | | | | | | | | | | | | | | | | |
| 4 Plants in nearly monospecific patches, dominate. Full rake head. | | | | | | | | | | | | | | | | | | |
| 5 Thick growth covering area. Plants falling off rake head. | | | | | | | | | | | | | | | | | | |
| NOTES: Water clarity was excellent. Bottom could be seen down to 9-10 feet. Great to see the bottom of the lake almost throughout the entire lake. | | | | | | | | | | | | | | | | | | |
| 1 | 16 Adult and 15 Juvenile Geese | | | | | | | | | | | | | | | | | |
| 2 | YFI - Many parcels around the lake that are not scheduled for treatment have active YFI. Homeowners of these parcels are responsible for ensuring the YFI stems/seed pods are cut off and/or the plant is removed. | | | | | | | | | | | | | | | | | |
| 3 | Narrow Leaf Pondweed levels 1-4 in AVAS areas 1-7,11, 14-25, 27-28 | | | | | | | | | | | | | | | | | |
| 4 | Big Leaf Pondweed levels 1-3 AVAS areas 18, 21-22, 32-33 | | | | | | | | | | | | | | | | | |
| 5 | Tape Grass Levels 2 AVAS areas 4 & 17 - Tape Grass is just starting to emerge so we expect much more in the coming months. | | | | | | | | | | | | | | | | | |
| 6 | Curly Pondweed levels 1-3 in AVAS areas 18 and all conservation areas | | | | | | | | | | | | | | | | | |
| 7 | Nitella levels 1-2 in AVAS areas 2-4, 6, 8-9, 11, 15-16, 21-24, 27-32 | | | | | | | | | | | | | | | | | |
| 8 | Common Elodea 1-2 in AVAS area 33 | | | | | | | | | | | | | | | | | |



LAKE LAWRENCE SURVEY SHEET

| AVAS | Rake Pull | Geographic Location | Lat/Long | Depth (ft) | Water-Nymph | Nitella | Common Elodea | Narrow - Leaf | Curly | Big Leaf | Floating Leaf | Tape Grass | Coontail | Sago | Eel Grass | FWL | YFI | Geese A/G |
|----------|-----------|--|--------------------------|------------|-------------|---------|---------------|---------------|-------|----------|---------------|------------|----------|------|-----------|-----|-----|-----------|
| 1 | 1 | Red House & Garage w/white trim | 46.51.115 / 122.34.756 | | | | | | | | | | | | | | | |
| | 2 | Older Mobile Home | 46.51.138 / 122.34.782 | | | | | | | | | | | | | | | |
| | 3 | Crandalls Dock, Yellow 2 story | 46.51.162 / 122.34.776 | | | | | | | | | | | | | | | |
| | | Visual Observation: | | | | | | | | | | | | | | | | |
| | | | Overall Dominance Rating | | | | | | | | | | | | | | | |
| 2 | 1 | Log Cabin, land dock east of boat house | 46.51.179 / 122.34.764 | 5 | | 1 | | 1 | | | | | | | | | | 4/10 |
| | 2 | Long Lawn, Kathy B's house | 46.51.203 / 122.34.739 | 4.5 | | 1 | | | | | | | | | | | | |
| | 3 | Weeping willow, cement bulkhead | 46.51.221 / 122.34.704 | 4 | | 1 | | 1 | | | | | | | | | | |
| | | Visual Observation: | | | | | | | | | | | | | | | | |
| | | | Overall Dominance Rating | | | | | | | | | | | | | | | |
| 3 | 1 | Roberta's, tree near dock | 46.51.228 / 122.34.684 | 4 | | 1 | | 1 | | | | | | | | | | 2/5 |
| | 2 | Roberta's, fire pit | 46.51.236 / 122.34.644 | 4 | | 1 | | 1 | | | | | | | | | | 4 |
| | 3 | End of Canal before dock | 46.51.255 / 122.34.602 | 5 | | 1 | | | | | | | | | 1 | 2 | | |
| | | Visual Observation: | | | | | | | | | | | | | | | | |
| | | | Overall Dominance Rating | | | | | | | | | | | | | | | |
| 4 | 1 | Gray's dock, further off shore | 46.51.279 / 122.34.590 | 4.5 | | | | 1 | | | | | | | | | | |
| | 2 | North of Gray's dock, flag pole | 46.51.289 / 122.34.609 | 4 | | 2 | | | | | | | | | | | | |
| | 3 | Davis House, West of weedy dock | 46.51.294 / 122.34.615 | 4 | | | | 1 | | | | | | | | | | |
| | | Visual Observation: | | 4 | | | | 3 | | | | 2 | | | | | | |
| | | | Overall Dominance Rating | | | | | | | | | | | | | | | |
| 5 | 1 | Debbie's house, single story grey off dock | 46.51.313 / 122.34.653 | 5 | | | | 2 | | | | | | | | | | |
| | 2 | Flag Pole before Skips | 46.51.340 / 122.34.630 | 4.5 | | | | 1 | | | | | | | | | | |
| | 3 | Empty lot w/RV center of lot | 46.51.371 / 122.34.653 | 4 | | | | | | | | | | | | | 2 | |
| | | Visual Observation: | | 4 | | | | | | | | | | | | | | |
| | | | Overall Dominance Rating | | | | | | | | | | | | | | | |
| 6 | 1 | Leitzke House dock | 46.51.363 / 122.34.608 | 4 | | | | | | | | | | | | | | |
| | 2 | West of LLCC Dock | 46.51.399 / 122.34.643 | 5 | | 1 | | 1 | | | | | | | | | | |
| | 3 | | 46.51.4011 / 122.34.633 | | | | | | | | | | | | | | | |
| | | Visual Observation: | | 4 | | | | | | | | | | | | | | |
| | | | Overall Dominance Rating | | | | | | | | | | | | | | | |
| 7 | 1 | LLCC Swim Area - middle | 46.51.404 / 122.34.595 | 6 | | | | 1 | | | | | | | | | | |

LAKE LAWRENCE SURVEY SHEET

| AVAS | Rake Pull | Geographic Location | Lat/Long | Depth (ft) | Water-Nymph | Nitella | Common Elodea | Narrow - Leaf | Curly | Big Leaf | Floating Leaf | Tape Grass | Coontail | Sago | Eel Grass | FWL | YFI | Geese A/G |
|-------------|---------------------|---|--------------------------|-------------------|--------------------|----------------|----------------------|----------------------|--------------|-----------------|----------------------|-------------------|-----------------|-------------|------------------|------------|------------|------------------|
| | 2 | LLCC end of long dock (swim platform) | 46.51.424 / 122.34.580 | 10+ | | | | | | | | | | | | | | |
| | 3 | | 46.51.414 / 122.34/530 | | | | | | | | | | | | | | | |
| | Visual Observation: | | | | | | | | | | | | | | | | | |
| | | | Overall Dominance Rating | | | | | | | | | | | | | | | |
| 8 | 1 | LLCC Picnic Cabana - near shore | 46.51.454 / 122.34.568 | 4.5 | | 1 | | | | | | | | | | | | |
| | 2 | LLCC Fire Pit | 46.51.481 / 122.34.531 | 4.5 | | 1 | | | | | | | | | | | | |
| | 3 | Tan house dock | 46.51.489 / 122.34.485 | 5 | | 1 | | | | | | | | | | | 2 | |
| | Visual Observation: | | | 5 | | | | | | | | | | | | | | |
| | | | Overall Dominance Rating | | | | | | | | | | | | | | | |
| 9 | 1 | Tutor House - west side | 46.51.498 / 122.34.462 | 5 | | | | | | | | | | | | | | |
| | 2 | Grey house white trim | 46.51.492 / 122.34.500 | 5 | | 1 | | | | | | | | | | | 4 | |
| | 3 | Big Dock for White Trim & Glass deck railing | 46.51.500 / 122.34.440 | | | | | | | | | | | | | | | |
| | Visual Observation: | | | | | | | | | | | | | | | | | |
| | | | Overall Dominance Rating | | | | | | | | | | | | | | | |
| 10 | 1 | Schorno's - north side | 46.51.498 / 122.34.406 | 5.5 | | | | | | | | | | | | | | |
| | 2 | Shorno Dock end | 46.51.493 / 122.34.372 | 10+ | | | | | | | | | | | | | | |
| | 3 | Scenic shores boat launch | 46.51.486 / 122.34.348 | 10+ | | | | | | | | | | | | | | |
| | Visual Observation: | | | | | | | | | | | | | | | | | |
| | | | Overall Dominance Rating | | | | | | | | | | | | | | | |
| 11 | 1 | Scenic Shores Park between swim docks | 46.51.492 / 122.34.293 | 10+ | | | | 1 | | | | | | | | | 2 | |
| | 2 | South of 2nd dock in front of Private property sign and grill | 46.51.494 / 122.34.330 | 10+ | | 1 | | | | | | | | | | | 2 | |
| | 3 | South edge of park near buoy line | 46.51.495 / 122.34.245 | 10+ | | | | | | | | | | | | | | |
| | Visual Observation: | | | | | | | | | | | | | | | | | |
| | | | Overall Dominance Rating | | | | | | | | | | | | | | | |

LAKE LAWRENCE SURVEY SHEET

| AVAS | Rake Pull | Geographic Location | Lat/Long | Depth (ft) | Water-Nymph | Nitella | Common Elodea | Narrow - Leaf | Curly | Big Leaf | Floating Leaf | Tape Grass | Coontail | Sago | Eel Grass | FWL | YFI | Geese A/G |
|------|-----------|---|--------------------------|------------|-------------|---------|---------------|---------------|-------|----------|---------------|------------|----------|------|-----------|-----|-----|-----------|
| 12 | 1 | Black "A" frame | 46.51.497 / 122.34.230 | 5 | | | | | | | | | | | | | | |
| | 2 | Castle house, 40 yds from shore | 46.51.486 / 122.34.203 | 6.5 | | | | | | | | | | | | | 3 | |
| | 3 | Front of red dock at Han's house | 46.51.485 / 122.34.165 | 10+ | | | | | | | | | | | | | | |
| | | Visual Observation: | | | | | | | | | | | | | | | | |
| | | | Overall Dominance Rating | | | | | | | | | | | | | | | |
| 13 | 1 | Boat launch at Wildaire Park | 46.51.441 / 122.34.070 | 10+ | | | | | | | | | | | | | | |
| | 2 | Front of No Lifeguard sign and burn pile at Wildaire | 46.51.432 / 122.34.048 | 10+ | | | | | | | | | | | | | 2 | |
| | 3 | South edge of Wildaire by Stewart's dock | 46.51.420 / 122.34.029 | 6 | | | | | | | | | | | | | | |
| | | Visual Observation: | | 6 | | | | | | | | | | | | | | |
| | | | Overall Dominance Rating | | | | | | | | | | | | | | | |
| 14 | 1 | Little A frame, 3rd dock after Wildaire, Brown w/white trim | 46.51.397 / 122.34.0104 | 5.5 | | | | | | | | | | | | | | |
| | 2 | Big A frame, front of dock & flagpole | 46.51.367 / 122.34.971 | 10+ | | | | 1 | | | | | | | | | 2 | |
| | 3 | Dark brown railing, white trim, front of rockery , Rocky bottom | 46.51.328 / 122.33.917 | 5.5 | | | | | | | | | | | | | | |
| | | Visual Observation: | | | | | | | | | | | | | | | 3 | |
| | | | Overall Dominance Rating | | | | | | | | | | | | | | | |
| 15 | 1 | Rockery, 2 level grey house w/ 2 level brown railing | 46.51.308 / 122.33.878 | 10+ | | | | 1 | | | | | | | | | 1 | |
| | 2 | 1/2 A frame w/ tall trees and long green lawn | 46.51.288 / 122.33.847 | 10+ | | | | | | | | | | | | | 2 | |
| | 3 | Old Boat House, Block Wall | 46.51.255 / 122.33.827 | 10+ | | 1 | | | | | | | | | | | 3 | |
| | | Visual Observation: | | 9 | | | | 2 | | | | | | | | | | |
| | | | Overall Dominance Rating | | | | | | | | | | | | | | | |
| 16 | 1 | A frame w/reeds and Trees on shoreline | 46.51.228 / 122.33.832 | 7.5 | | | | | | | | | | | | | 4 | |
| | 2 | Front of Shack and dock | 46.51.187 / 122.33.806 | 7.5 | | 1 | | | | | | | | | | | 2 | |
| | 3 | Tree area north of long dock | 46.51.164 / 122.33.781 | 5.5 | | | | 2 | | | | | | | | | 4 | 2 |
| | | Visual Observation: | | | | | | 3 | | | | | | | | | | |
| | | | Overall Dominance Rating | | | | | | | | | | | | | | | |

LAKE LAWRENCE SURVEY SHEET

| AVAS | Rake Pull | Geographic Location | Lat/Long | Depth (ft) | Water-Nymph | Nitella | Common Elodea | Narrow - Leaf | Curly | Big Leaf | Floating Leaf | Tape Grass | Coontail | Sago | Eel Grass | FWL | YFI | Geese A/G |
|------|-----------|---|--------------------------|------------|-------------|---------|---------------|---------------|-------|----------|---------------|------------|----------|------|-----------|-----|-----|-----------|
| 17 | 1 | North of dark grey new dock, in front of sunken dock | 46.51.145 / 122.33.774 | 10+ | | | | 3 | | | | | | | | | | |
| | 2 | In cove, in front of small one story house | 46.51.120 / 122.33.756 | 4.5 | | | | 2 | | | | | | | | | | |
| | 3 | Near shoreline log in water, near older floating dock | 46.51.109 / 122.33.783 | 6.5 | | | | 2 | | | | | | | | | | |
| | | Visual Observation: | | | | | | 4 | | | | 2 | | | | | | |
| | | | Overall Dominance Rating | | | | | | | | | | | | | | | |
| 18 | 1 | South side of old floating dock, near reeds - rocky bottom | 46.51.92 / 122.33.798 | | | | | | | | | | | | | | | |
| | 2 | Just around south side of point, Jon Carpenter's - rocky bottom | 46.51.074 / 122.33.792 | 8 | | | | 1 | | | | | | | | | | |
| | 3 | Fischer's floating wood dock, Big brown A frame | 46.51.056 / 122.33.763 | | | | | 1 | | | | | | | | | 3 | |
| | | Visual Observation: | | | | | | 1 | 3 | 3 | | | | | | | | |
| | | | Overall Dominance Rating | | | | | | | | | | | | | | | |
| 19 | 1 | North side of cove, front of newish long dock | 46.51.037 / 122.33.745 | 5 | | | | 2 | | | | | | | | | | |
| | 2 | Front of big blue house with white trim | 46.51.074 / 122.33.739 | 4 | | | | 2 | | | | | | | | | 4 | |
| | 3 | End of cove off small grey dock, Kimberly's | 46.50.992 / 122.33.767 | 4 | | | | 2 | | | | | | | | 2 | 4 | |
| | | Visual Observation: | | 4 | | | | 3 | | | | | | | | | | |
| | | | Overall Dominance Rating | | | | | | | | | | | | | | | |
| 20 | 1 | White ball buoy off of grey w/white trim home | 46.50.986 / 122.33.797 | 6.5 | | | | 2 | | | | | | | | | 4 | |
| | 2 | Front of Hinton's dock | 46.50.966 / 122.33.819 | 5.5 | | | | 2 | | | | | | | | | 4 | |
| | 3 | Between tall evergreens before "stairway house" | 46.50.941 / 122.33.835 | 6 | | | | 3 | | | | | | | | | 4 | |
| | | Visual Observation: | | | | | | | | | | | | | | | | |
| | | | Overall Dominance Rating | | | | | | | | | | | | | | | |

LAKE LAWRENCE SURVEY SHEET

| AVAS | Rake Pull | Geographic Location | Lat/Long | Depth (ft) | Water-Nymph | Nitella | Common Elodea | Narrow - Leaf | Curly | Big Leaf | Floating Leaf | Tape Grass | Coontail | Sago | Eel Grass | FWL | YFI | Geese A/G |
|------|-----------|--|--------------------------|------------|-------------|---------|---------------|---------------|-------|----------|---------------|------------|----------|------|-----------|-----|-----|-----------|
| 21 | 1 | Front of WDFW Boat Launch, next to dock | 46.51.005 / 122.34.308 | 8 | | 1 | | 3 | | | | | | | | | | |
| | 2 | West side of WDFW dock, rocky bottom | 46.51.006 / 122.34.319 | 7.5 | | 1 | | 2 | | 1 | | | | | | | | |
| | 3 | West side of WDFW property by fence line | 46.51.004 / 122.34.336 | 4 | | | | | | | | | | | | | | |
| | | Visual Observation: | | 4 | | | | 2 | | | | | | | | | | |
| | | | Overall Dominance Rating | | | | | | | | | | | | | | | |
| 22 | 1 | Front of terraced lot w/ 1st big Cedar Tree | 46.51.005 / 122.34.360 | 6 | | 2 | | 2 | | 2 | | | | | | | | |
| | 2 | Front of house brick 1st level, Light Grey lots of windows by dock | 46.51.000 / 122.34.382 | 5.5 | | 1 | | 2 | | | | | | | | | | |
| | 3 | White House w/block bulkhead and newish dock | 46.50.995 /122/34/437 | 6.5 | | 2 | | 3 | | | | | | | | | | |
| | | Visual Observation: | | 6 | | | | 2 | | 3 | | | | | 1 | | | |
| | | | Overall Dominance Rating | | | | | | | | | | | | | | | |
| 23 | 1 | Shingled house, white trim front of dock and flagpole | 46.50.987 / 122.34.470 | 6.5 | | 1 | | 1 | | | | | | | | | | |
| | 2 | Cabin w/Cinder Block Curved Seating Area, before dock | 46.50.972 / 122.34.499 | 6.5 | | | | 2 | | | | | | | | | 1 | |
| | 3 | Med Grey small house w/ lattice porch by boat lift | 46.50.948 / 122.34.522 | 7.5 | | | | | | | | | | | | | | |
| | | Visual Observation: | | | | | | | | | | | | | | | | |
| | | | Overall Dominance Rating | | | | | | | | | | | | | | | |
| 24 | 1 | Red door house w/ circular rock fire pit, front of dock | 46.50.930 / 122.34.532 | 7.5 | | 1 | | 3 | | | | | | | | | | |
| | 2 | Green metal roof house, front of dock | 46.50.913 / 122.34.540 | 7 | | 1 | | | | | | | | | | | | |
| | 3 | By boat lift in front of triple A frame w/2 skylights | 46.50.992 / 122.34.559 | 7 | | 1 | | 1 | | | | | | | | | | |
| | | Visual Observation: | | | | | | | | | | | | | | | | |
| | | | Overall Dominance Rating | | | | | | | | | | | | | | | |
| 25 | 1 | Front of Grey house w/glass railing, flagpole | 46.50.884 / 122.34.571 | 6.5 | | | | 1 | | | | | | | | | | |
| | 2 | Log Cabin front of dock | 46.50.870 / 122.34.553 | 6.5 | | | | | | | | | | | | | | |
| | 3 | Front of Yellow house dock | 46.50.826 / 122.34/651 | 5.5 | | | | | | | | | | | | | 1 | |
| | | Visual Observation: | | | | | | | | | | | | | | | 4 | |

LAKE LAWRENCE SURVEY SHEET

| AVAS | Rake Pull | Geographic Location | Lat/Long | Depth (ft) | Water-Nymph | Nitella | Common Elodea | Narrow - Leaf | Curly | Big Leaf | Floating Leaf | Tape Grass | Coontail | Sago | Eel Grass | FWL | YFI | Geese A/G | | |
|------|-----------|--|--------------------------|------------|-------------|---------|---------------|---------------|-------|----------|---------------|------------|----------|------|-----------|-----|-----|-----------|--|--|
| | | | Overall Dominance Rating | | | | | | | | | | | | | | | | | |
| 26 | 1 | 3 story white house in front of flagpole | 46.50.807 / 122.34.695 | 5 | | | | | | | | | | | | | | | | |
| | 2 | 2 story cream w/derelict dock and huge evergreens | 46.50.834 / 122.34.718 | 5.5 | | | | | | | | | | | | | | | | |
| | 3 | Front of dock of A frame w/2 stone walls | 46.50.853 / 122.34.725 | 5 | | | | | | | | | | | | | | | | |
| | | Visual Observation: | | 5 | | | | | | | | | | | | | | | | |
| | | | Overall Dominance Rating | | | | | | | | | | | | | | | | | |
| 27 | 1 | Monkey pod tree by big beige house | 46.50.852 / 122.34.752 | 6 | | 1 | | 1 | | | | | | | | 1 | 1 | | | |
| | 2 | New orleans house front of black dock | 46.50.859 / 122.34.802 | 6.5 | | | | | | | | | | | | | | | | |
| | 3 | Between 4 story beige house & grey dock with bridge | 46.50.864 / 122.34.833 | 6 | | 1 | | | | | | | | | | | | | | |
| | | Visual Observation: | | 6 | | | | | | | | | | | | | | 4 | | |
| | | | Overall Dominance Rating | | | | | | | | | | | | | | | | | |
| 28 | 1 | Front of overgrown house near post coming out of water | 46.50.889 / 122.34.844 | 6.5 | | | | | | | | | | | | | | 1 | | |
| | 2 | Chris's grey house, north side of dock front of fire pit | 46.50.915 / 122.34.862 | 6 | | 1 | | | | | | | | | | | | 3 | | |
| | 3 | Front of Weir by dock | 46.50.945 / 122.34.903 | 6 | | 1 | | 1 | | | | | | | | | | | | |
| | | Visual Observation: | | | | | | | | | | | | | | | | | | |
| | | | Overall Dominance Rating | | | | | | | | | | | | | | | | | |
| 29 | 1 | Front of A frame and flagpole, gravel bottom | 46.50.973 / 122.34.898 | 5.5 | | | | | | | | | | | | | | 1 | | |
| | 2 | between docks of double stonewall house | 46.50.998 / 122.34.916 | 5.5 | | 1 | | | | | | | | | | | | | | |
| | 3 | North of dock of Frank's house, green w/white trim | 46.51.021 / 122.34.933 | 3.5 | | | | | | | | | | | | | | 3 | | |
| | | Visual Observation: | | | | | | | | | | | | | | | | | | |
| | | | Overall Dominance Rating | | | | | | | | | | | | | | | | | |

LAKE LAWRENCE SURVEY SHEET

| AVAS | Rake Pull | Geographic Location | Lat/Long | Depth (ft) | Water-Nymph | Nitella | Common Elodea | Narrow - Leaf | Curly | Big Leaf | Floating Leaf | Tape Grass | Coontail | Sago | Eel Grass | FWL | YFI | Geese A/G | |
|------|---------------------|--|--------------------------|------------|-------------|---------|---------------|---------------|-------|----------|---------------|------------|----------|------|-----------|-----|-----|-----------|--|
| 30 | 1 | Front of 1st A frame next to LLCC park | 46.51.038 / 122.34.931 | 3.5 | | 1 | | | | | | | | | | | | | |
| | 2 | 3rd house from park, front of red dock and swing set | 46.51.050 / 122.34.891 | 6.5 | | 1 | | | | | | | | | | | | | |
| | 3 | front of dock of A frame w/Green metal roof | 46.51.058 / 122.34.880 | 6.5 | | 2 | | | | | | | | | | | | | |
| | Visual Observation: | | | | 6.5 | | | | | | | | | | | | | | |
| | | | Overall Dominance Rating | | | | | | | | | | | | | | | | |
| 31 | 1 | Front of pink/cream house's dock | 46.51.065 / 122.34.859 | 7 | | 2 | | | | | | | | | | | | | |
| | 2 | front of Octagon House dock | 46.51.061 / 122.34.844 | 10+ | | 2 | | | | | | | | | | | | | |
| | 3 | Concrete barrier, mid grey w/white trim house's dock | 46.51.059 /122.34.822 | 10+ | | | | | | | | | | | | | 3 | | |
| | Visual Observation: | | | | | | | | | | | | | | | | | | |
| | | | Overall Dominance Rating | | | | | | | | | | | | | | | | |
| 32 | 1 | By Big orange buoy and covered picnic area | 46.51.043 /122.34.781 | 10+ | | | | | | | | | | | | | | | |
| | 2 | Start of cyclone fence between docks | 46.51.029 / 122.34.715 | 10+ | | 1 | | | | | | | | | | | 1 | | |
| | 3 | Retaining wall | 46.51.030 / 122.34.645 | 10+ | | 1 | | | | | | | | | | | | | |
| | Visual Observation: | | | | 4 | | | | | | 3 | | | | | | | | |
| | | | Overall Dominance Rating | | | | | | | | | | | | | | | | |
| 33 | 1 | 1st dock | 46.51.0429 / 122.34.644 | 10+ | | | | | | | | | | | | | 1 | | |
| | 2 | Little shed/cabin with railing on shoreline | 46.51.051 / 122.34.590 | 10+ | | | 2 | | | 1 | | | | | | | | | |
| | 3 | Edward's Peninsula, old dock before channel | 46.51.035 / 122.34.551 | 10+ | | | 1 | | | 4 | | | | | | | | | |
| | Visual Observation: | | | | | | | | | 2 | | | | | | | | | |
| | | | Overall Dominance Rating | | | | | | | | | | | | | | | | |