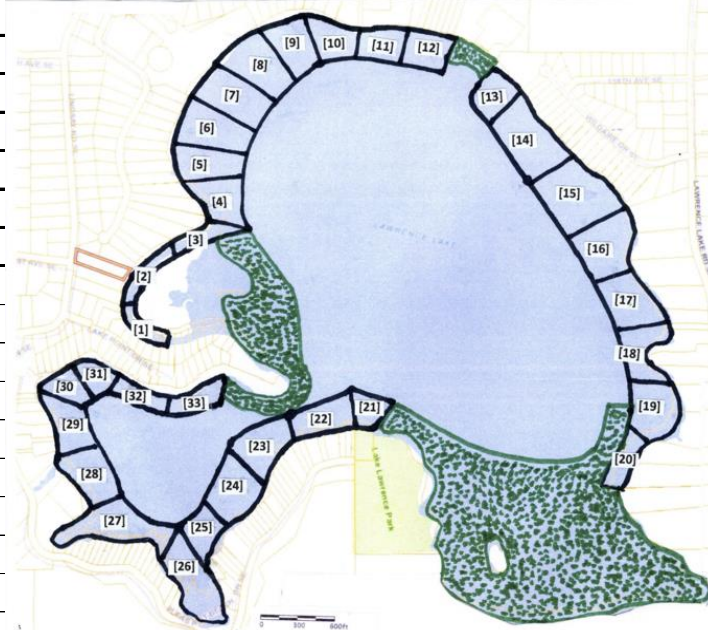


LAKE LAWRENCE SURVEY SHEET

	A	B	C	D	E	F	G	H	I	J	K	L	M	N	O	P	Q
1	DATE:	20-Aug-24						COLLECTOR(S):				Barry, Jim, Ken, Terry, and Janice					
2		Air Temp: 70		Water Surface Temp:		69		Weather: Overcast			Water Depth			1.09			
3	AVAS	Rake Pull	Geographic Location	Lat/Long	Depth (ft)	Water-Nymph	Nitella	Common Elodea	Narrow-Leaf Pondweed	Curly Pondweed	Big Leaf Pondweed	Floating Leaf Pondweed	Tape Grass	Coontail	Sago Pondweed	Fragrant Water Lily	YFI
4	A summary of the survey is provided below. Detailed survey results by AVAS are shown on subsequent pages																
5	RATINGS:																
6		1	Few plants in only 1 or a few locations - used to record the fact that a plant or specific species was found.														
7		2	Few plants, but with a wide patchy distribution. Small number of plants on rake head.														
8		3	Plants growing in large patches, codominant with other plants. More plants than 2, but fewer than a full rake head.														
9		4	Plants in nearly monospecific patches, dominate. Full rake head.														
10		5	Thick growth covering area. Plants falling off rake head.														
11																	
12	NOTES:	AVASs 1-3 (Canal)		Treated 12&29 July - no live aquatic plants visible													
13		AVAS 4 Mouth of Canal		Treated 12&29 July - very few live aquatic plants visible													
14		AVAS 5		Harvested 12-15 Aug - very few aquatic plants													
15		AVAS 6-7		Harvested 12-15 Aug - very few aquatic plants													
16		AVAS 8-9		Harvested 12-15 Aug - very few aquatic plants													
17		AVAS 10-15		Harvested 12-15 Aug - very few aquatic plants													
18		AVAS 16		Harvested 12-15 Aug - very few aquatic plants													
19		AVAS 11-16		Harvested 12-15 Aug - very few aquatic plants													
20		AVAS 17-20		Treated 12 & 29 July - CLP undetectable - Some others still present													
21		AVAS 21		Treated 12 & 29 July - very few weeds detectable - No CLP													
22		AVAS 22-30		Treated 12 & 29 July - CLP undetectable - Some others still present													
23		AVAS 31-32		Treated 12 & 29 July - CLP undetectable - Some others still present													
24		AVAS 33		Small amounts of Elodea													
25		Conservation Area Southeast Goat Island		Too full of lily's to see anything													
26		South Lake Lawrence Conservation Area		Too shallow/too many lilies													
27		1	This is the last survey for 2024. It was conducted following all aquatic weed treatments (12 and 29 July) and aquatic weed harvesting (12-15 August).														
28		2	Aquatic Weed Treatment - Survey could not detect any CLP in treated areas. Water Nymph and Narrow Leaf Pondweed appeared to be impacted by this treatment, but Elodea and Tape Grass were not. In fact Tape Grass appeared to flourish once the other plants were suppressed.														
29		3	Aquatic Weed Harvesting - Areas where weed harvesting occurred (see above) showed considerable reduction and near elimination of aquatic vegetation. Vegetation was not harvested between docks.														
30		4	Depth measurements for individual AVASs were not taken during this survey as treatment had already happened.														



LAKE LAWRENCE SURVEY SHEET

	A	B	C	D	E	F	G	H	I	J	K	L	M	N	O	P	Q	
3	AVAS	Rake Pull	Geographic Location	Lat/Long	Depth (ft)	Water-Nymph	Nitella	Common Elodea	Narrow-Leaf Pondweed	Curly Pondweed	Big Leaf Pondweed	Floating Leaf Pondweed	Tape Grass	Coontail	Sago Pondweed	Fragrant Water Lily	YFI	
31	1	1	Red House & Garage w/white trim	46.51.115 / 122.34.756		Treated w/Galleon SC 12 & 29 July												
32		2	Older Mobile Home	46.51.138 / 122.34.782		Treated w/Galleon SC 12 & 29 July												
33		3	Crandalls Dock, Yellow 2 story	46.51.162 / 122.34.776		Treated w/Galleon SC 12 & 29 July												
34			Visual Observation:															
35				Overall Dominance Rating														
36	2	1	Log Cabin, land dock east of boat house	46.51.179 / 122.34.764		Treated w/Galleon SC 12 & 29 July												
37		2	Long Lawn, Kathy B's house	46.51.203 / 122.34.739		Treated w/Galleon SC 12 & 29 July												
38		3	Weeping willow, cement bulkhead	46.51.221 / 122.34.704		Treated w/Galleon SC 12 & 29 July												
39			Visual Observation:															
40				Overall Dominance Rating														
41	3	1	Roberta's, tree near dock	46.51.228 / 122.34.684		Treated w/Galleon SC 12 & 29 July												
42		2	Roberta's, fire pit	46.51.236 / 122.34.644		Treated w/Galleon SC 12 & 29 July												
43		3	End of Canal before dock	46.51.255 / 122.34.602		Treated w/Galleon SC 12 & 29 July												
44			Visual Observation:															
45				Overall Dominance Rating														
46	4	1	Gray's dock, further off shore	46.51.279 / 122.34.590			4	4	Treated w/Galleon SC 12 & 29 July									
47		2	North of Gray's dock, flag pole	46.51.289 / 122.34.609		Harvested 12-15 Aug											X	
48		3	Davis House, West of weedy dock	46.51.294 / 122.34.615		Harvested 12-15 Aug											X	
49			Visual Observation:															
50				Overall Dominance Rating														
51	5	1	Debbie's house, single story grey off dock	46.51.313 / 122.34.653		Harvested 12-15 Aug											X	
52		2	Flag Pole between little yellow & Brown house	46.51.340 / 122.34.630		Harvested 12-15 Aug											X	
53		3	Empty lot w/RV center of lot	46.51.371 / 122.34.653		Harvested 12-15 Aug											X	
54			Visual Observation:															
55				Overall Dominance Rating														
56	6	1	Leitzke House dock	46.51.363 / 122.34.608		Harvested 12-15 Aug											X	
57		2																
58		3																
59			Visual Observation:															
60				Overall Dominance Rating														

LAKE LAWRENCE SURVEY SHEET

	A	B	C	D	E	F	G	H	I	J	K	L	M	N	O	P	Q
3	AVAS	Rake Pull	Geographic Location	Lat/Long	Depth (ft)	Water-Nymph	Nitella	Common Elodea	Narrow-Leaf Pondweed	Curly Pondweed	Big Leaf Pondweed	Floating Leaf Pondweed	Tape Grass	Coontail	Sago Pondweed	Fragrant Water Lily	YFI
61	7	1	LLCC Swim Area - middle	46.51.404 / 122.34.595			2	2	Harvested 12-15 Aug				2				
62		2	LLCC end of long dock (swim platform)	46.51.424 / 122.34.580					Harvested 12-15 Aug								
63		3		46.51.414 / 122.34/530					Harvested 12-15 Aug								
64			Visual Observation:														
65				Overall Dominance Rating			0.5	0.5					0.5				
66	8	1	LLCC Picnic Cabana - near shore	46.51.454 / 122.34.568					Harvested 12-15 Aug							x	
67		2	LLCC Fire Pit	46.51.481 / 122.34.531					Harvested 12-15 Aug							x	
68		3	Tan house dock	46.51.489 / 122.34.485					Harvested 12-15 Aug							x	
69			Visual Observation:														
70				Overall Dominance Rating													
71	9	1	Tutor House - west side	46.51.498 / 122.34.462					Harvested 12-15 Aug							x	
72		2	Grey house white trim	46.51.492 / 122.34.500					Harvested 12-15 Aug							x	
73		3	Big Dock for White Trim & Glass deck railing	46.51.500 / 122.34.440					Harvested 12-15 Aug							x	
74			Visual Observation:														
75				Overall Dominance Rating													
76	10	1	Schorno's - north side	46.51.498 / 122.34.406					Harvested 12-15 Aug								
77		2	Shorno Dock end	46.51.493 / 122.34.372					Harvested 12-15 Aug							x	
78		3	Scenic shores boat launch	46.51.486 / 122.34.348					Harvested 12-15 Aug							x	
79			Visual Observation:														
80				Overall Dominance Rating													
81	11	1	Scenic Shores Park between swim docks	46.51.492 / 122.34.293					Harvested 12-15 Aug								
82		2	South of 2nd dock in front of Private property sign and grill	46.51.494 / 122.34.330					Harvested 12-15 Aug								
83		3	South edge of park near buoy line	46.51.495 / 122.34.245					Harvested 12-15 Aug							x	
84			Visual Observation:														
85				Overall Dominance Rating													
86	12	1	Brown A frame w/green trim, rocky bottom	46.51.497 / 122.34.230					Harvested 12-15 Aug								
87		2	Castle house, 40 yds from shore	46.51.486 / 122.34.203					Harvested 12-15 Aug								
88		3	Front of red dock at Han's house	46.51.485 / 122.34.165					Harvested 12-15 Aug								
89			Visual Observation:														
90				Overall Dominance Rating													

LAKE LAWRENCE SURVEY SHEET

	A	B	C	D	E	F	G	H	I	J	K	L	M	N	O	P	Q	
3	AVAS	Rake Pull	Geographic Location	Lat/Long	Depth (ft)	Water-Nymph	Nitella	Common Elodea	Narrow - Leaf Pondweed	Curly Pondweed	Big Leaf Pondweed	Floating Leaf Pondweed	Tape Grass	Coontail	Sago Pondweed	Fragrant Water Lily	YFI	
91	13	1	Boat launch at Wildaire Park	46.51.441 / 122.34.070					Harvested 12-15 Aug							X		
92		2	Front of No Lifeguard sign and burn pile at Wildaire	46.51.432 / 122.34.048					Harvested 12-15 Aug							X		
93		3	South edge of Wildaire by Stewart's dock	46.51.420 / 122.34.029					Harvested 12-15 Aug							X		
94		Visual Observation:																
95				Overall Dominance Rating														
96	14	1	Little A frame, 3rd dock after Wildaire, Brown w/white trim	46.51.397 / 122.34.0104					Harvested 12-15 Aug									
97		2	Big A frame, front of dock & flagpole	46.51.367 / 122.34.971			1	1	Harvested 12-15 Aug							X		
98		3	Dark brown railing, white trim, front of rockery , Rocky bottom	46.51.328 / 122.33.917					Harvested 12-15 Aug							X		
99		Visual Observation:																
100				Overall Dominance Rating														
101	15	1	Rockery, 2 level grey house w/ 2 level brown railing	46.51.308 / 122.33.878					Harvested 12-15 Aug							X		
102		2	1/2 A frame w/ tall trees and long green lawn	46.51.288 / 122.33.847					Harvested 12-15 Aug							X		
103		3	Old Boat House, Block Wall	46.51.255 / 122.33.827					Harvested 12-15 Aug							X		
104		Visual Observation:																
105				Overall Dominance Rating														
106	16	1	A frame w/reeds and Trees on shoreline	46.51.228 / 122.33.832					Harvested 12-15 Aug							X		
107		2	Front of Shack and dock	46.51.187 / 122.33.806			2	1	Harvested 12-15 Aug							X		
108		3	Tree area north of long dock	46.51.164 / 122.33.781					Harvested 12-15 Aug							X		
109		Visual Observation:															X	
110				Overall Dominance Rating														
111	17	1	North of dark grey new dock, in front of sunken dock	46.51.145 / 122.33.774			2		2	Harvested 12-15 Aug		3				X		
112		2	In cove, in front of small one story house	46.51.120 / 122.33.756			1		2	Harvested 12-15 Aug		1				X		
113		3	Near shoreline log in water, near older floating dock	46.51.109 / 122.33.783			1		2	Harvested 12-15 Aug						X		
114		Visual Observation:					1		2									
115				Overall Dominance Rating				0.75	0.5	2				1				

LAKE LAWRENCE SURVEY SHEET

	A	B	C	D	E	F	G	H	I	J	K	L	M	N	O	P	Q
3	AVAS	Rake Pull	Geographic Location	Lat/Long	Depth (ft)	Water-Nymph	Nitella	Common Elodea	Narrow - Leaf Pondweed	Curly Pondweed	Big Leaf Pondweed	Floating Leaf Pondweed	Tape Grass	Coontail	Sago Pondweed	Fragrant Water Lily	YFI
116	18	1	South side of old floating dock, near reeds - rocky bottom	46.51.92 / 122.33.798		1							1			x	
117		2	Just around south side of point, Jon Carpenter's - rocky bottom	46.51.074 / 122.33.792		1			1				1			x	
118		3	Fischer's floating wood dock, Big brown A frame	46.51.056 / 122.33.763					1				1			x	
119			Visual Observation:			1							1				
120				Overall Dominance Rating		0.75			0.5				1				
121	19	1	North side of cove, front of newish long dock	46.51.037 / 122.33.745		2			2				1			x	
122		2	Front of big blue house with white trim	46.51.074 / 122.33.739		2		2	2				1			x	
123		3	End of cove off small grey dock, Kimberly's	46.50.992 / 122.33.767		2			2				1			x	
124			Visual Observation:			2			2				1				
125				Overall Dominance Rating		2		1	2				1				
126	20	1	White ball buoy off of grey w/white trim home	46.50.986 / 122.33.797		1		1	2				1			x	
127		2	Front of Hinton's dock	46.50.966 / 122.33.819		2			1				1			x	
128		3	Between tall evergreens before "stairway house"	46.50.941 / 122.33.835		2			1				1			x	
129			Visual Observation:			2			1				1				
130				Overall Dominance Rating		1.75		0.25	1.25				1				
131	21	1	Front of WDFW Boat Launch, next to dock	46.51.005 / 122.34.308				2								x	
132		2	West side of WDFW dock, rocky bottom	46.51.006 / 122.34.319				2	1							x	
133		3	West side of WDFW property by fence line	46.51.004 / 122.34.336				2	1				2			x	
134			Visual Observation:						2								
135				Overall Dominance Rating				1.5	1				0.5				
136	22	1	Front of terraced lot w/ 1st big Cedar Tree	46.51.005 / 122.34.360		1		2	1				2			x	
137		2	Front of house brick 1st level, dark brown lots of windows by dock	46.51.000 / 122.34.382		2		2	1				2			x	
138		3	Vacant lot with newish dock	46.50.995 / 122/34/437		2		2								x	
139			Visual Observation:			2		2	1								
140				Overall Dominance Rating		1.75		2	0.75		0.25		1				

LAKE LAWRENCE SURVEY SHEET

	A	B	C	D	E	F	G	H	I	J	K	L	M	N	O	P	Q	
3	AVAS	Rake Pull	Geographic Location	Lat/Long	Depth (ft)	Water-Nymph	Nitella	Common Elodea	Narrow - Leaf Pondweed	Curly Pondweed	Big Leaf Pondweed	Floating Leaf Pondweed	Tape Grass	Coontail	Sago Pondweed	Fragrant Water Lily	YFI	
141	23	1	Shingled house, white trim front of dock and flagpole	46.50.987 / 122.34.470		1		2		Treated w/Galleon SC							x	
142		2	Cabin w/Brick BBQ, before dock	46.50.972 / 122.34.499		1		2	1	Treated w/Galleon SC								
143		3	Med Grey small house w/ lattice porch by boat lift	46.50.948 / 122.34.522		1				Treated w/Galleon SC								
144		Visual Observation:				1			1									
145				Overall Dominance Rating		1		1	0.5									
146	24	1	Red door house w/ circular rock fire pit, front of dock	46.50.930 / 122.34.532		1		2	1	Treated w/Galleon SC							x	
147		2	Green metal roof house, front of dock	46.50.913 / 122.34.540		1		2	2	Treated w/Galleon SC			1					
148		3	By boat lift in front of triple A frame w/2 skylights	46.50.992 / 122.34.559		1			1	Treated w/Galleon SC								
149		Visual Observation:				1		2	1									
150				Overall Dominance Rating		1		1.5	1.25					0.3				
151	25	1	Front of Grey house w/glass railing, flagpole	46.50.884 / 122.34.571		1		2	1	Treated w/Galleon SC			1					
152		2	Log Cabin front of dock	46.50.870 / 122.34.553		1			1	Treated w/Galleon SC			1					
153		3	Front of Yellow house dock	46.50.826 / 122.34/651		2		1	1	Treated w/Galleon SC								
154		Visual Observation:				2		2	1									
155				Overall Dominance Rating		1.5		1.25	1					0.5				
156	26	1	3 story white house in front of flagpole	46.50.807 / 122.34.695		1				Treated w/Galleon SC			1					
157		2	2 story cream w/derelict dock and huge evergreens	46.50.834 / 122.34.718		2				Treated w/Galleon SC			1					
158		3	Front of dock of A frame w/2 stone walls	46.50.853 / 122.34.725		1				Treated w/Galleon SC							x	
159		Visual Observation:				1												
160				Overall Dominance Rating		1.25								0.5				
161	27	1	Monkey pod tree by big beige house	46.50.852 / 122.34.752		1				Treated w/Galleon SC			1					
162		2	New orleans house front of black dock	46.50.859 / 122.34.802					2	Treated w/Galleon SC			1					
163		3	Between 4 story beige house & grey dock with bridge	46.50.864 / 122.34.833						Treated w/Galleon SC			1				x	
164		Visual Observation:							2				1					
165				Overall Dominance Rating		0.25			0.5				1					

LAKE LAWRENCE SURVEY SHEET

	A	B	C	D	E	F	G	H	I	J	K	L	M	N	O	P	Q	
3	AVAS	Rake Pull	Geographic Location	Lat/Long	Depth (ft)	Water-Nymph	Nitella	Common Elodea	Narrow - Leaf Pondweed	Curly Pondweed	Big Leaf Pondweed	Floating Leaf Pondweed	Tape Grass	Coontail	Sago Pondweed	Fragrant Water Lily	YFI	
166	28	1	Front of overgrown house near post coming out of water	46.50.889 / 122.34.844									Treated w/Galleon SC	1			x	
167		2	Chris's grey house, north side of dock front of fire pit	46.50.915 / 122.34.862									Treated w/Galleon SC	1				
168		3	Front of Weir by dock	46.50.945 / 122.34.903			2		1				Treated w/Galleon SC	1			x	
169			Visual Observation:						1				1					
170				Overall Dominance Rating					0.5				1					
171	29	1	Front of A frame and flagpole, gravel bottom	46.50.973 / 122.34.898									Treated w/Galleon SC	1			x	
172		2	between docks of double stonewall house	46.50.998 / 122.34.916									Treated w/Galleon SC	1			x	
173		3	North of dock of Frank's house, green w/white trim	46.51.021 / 122.34.933					1				Treated w/Galleon SC	1			x	
174			Visual Observation:						1				1					
175				Overall Dominance Rating					0.5				1					
176	30	1	Front of 1st A frame next to LLCC park	46.51.038 / 122.34.931		1			1				Treated w/Galleon SC	2			x	
177		2	3rd house from park, front of red dock and swing set	46.51.050 / 122.34.891		1			1				Treated w/Galleon SC	1				
178		3	front of dock of A frame w/Green metal roof	46.51.058 / 122.34.880		1			1				Treated w/Galleon SC	2			x	
179			Visual Observation:						1				1					
180				Overall Dominance Rating		0.75			1				1.5					
181	31	1	Front of pink/cream house's dock	46.51.065 / 122.34.859		1			1				Treated w/Galleon SC	1			x	
182		2	front of Octagon House dock	46.51.061 / 122.34.844		1			1				Treated w/Galleon SC	1			x	
183		3	Concrete barrier, mid grey w/white trim house's dock	46.51.059 / 122.34.822			2		1				Treated w/Galleon SC	2			x	
184			Visual Observation:			1			1				1					
185				Overall Dominance Rating		0.75	0.5		1			0.25	1.3					
186	32	1	By Big orange buoy and covered picnic area	46.51.043 / 122.34.781									Treated w/Galleon SC				x	
187		2	Start of cyclone fence between docks	46.51.029 / 122.34.715														
188		3	Retaining wall	46.51.030 / 122.34.645				2										
189			Visual Observation:															
190				Overall Dominance Rating				0.5										

LAKE LAWRENCE SURVEY SHEET

	A	B	C	D	E	F	G	H	I	J	K	L	M	N	O	P	Q
3	AVAS	Rake Pull	Geographic Location	Lat/Long	Depth (ft)	Water-Nymph	Nitella	Common Elodea	Narrow-Leaf Pondweed	Curly Pondweed	Big Leaf Pondweed	Floating Leaf Pondweed	Tape Grass	Coontail	Sago Pondweed	Fragrant Water Lily	YFI
191	33	1	1st dock	46.51.0429 / 122.34.644													
192		2	Little shed/cabin with railing on shoreline	46.51.051 / 122.34.590													
193		3	Edward's Peninsula, old dock before channel	46.51.035 / 122.34.551			2						1			X	
194		Visual Observation:															
195				Overall Dominance Rating				0.5					0.3				
196	RATINGS:																
197		1	Few plants in only 1 or a few locations - used to record the fact that a plant or specific species was found.														
198		2	Few plants, but with a wide patchy distribution. Small number of plants on rake head.														
199		3	Plants growing in large patches, codominant with other plants. More plants than 2, but fewer than a full rake head.														
200		4	Plants in nearly monospecific patches, dominate. Full rake head.														
201		5	Thick growth covering area. Plants falling off rake head.														
202																	
203	NOTES:		AVASs 1-3 (Canal)	Treated 12&29 July - no live aquatic plants visible													
204			AVAS 4 Mouth of Canal	Treated 12&29 July - very few live aquatic plants visible													
205			AVAS 5	Harvested 12-15 Aug - very few aquatic plants													
206			AVAS 6-7	Harvested 12-15 Aug - very few aquatic plants													
207			AVAS 8-9	Harvested 12-15 Aug - very few aquatic plants													
208			AVAS 10-15	Harvested 12-15 Aug - very few aquatic plants													
209			AVAS 16	Harvested 12-15 Aug - very few aquatic plants													
210			AVAS 11-16	Harvested 12-15 Aug - very few aquatic plants													
211			AVAS 17-20	Treated 12 & 29 July - CLP undetectable - Some others still present													
212			AVAS 21	Treated 12 & 29 July - very few weeds detectable - No CLP													
213			AVAS 22-30	Treated 12 & 29 July - CLP undetectable - Some others still present													
214			AVAS 31-32	Treated 12 & 29 July - CLP undetectable - Some others still present													
215			AVAS 33	Small amounts of Elodea													
216			Conservation Area Southeast Goat Island	Too full of lily's to see anything													
217			South Lake Lawrence Conservation Area	Too shallow/too many lilies													
218																	
219																	
220																	

